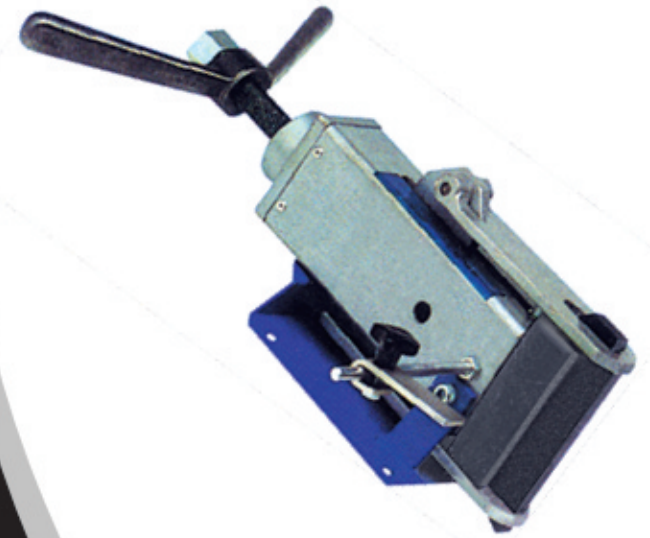




## 3 Jaw Punch Former

# TTC

**Before Operating Your Tools,  
Please Read This Instruction Carefully**



**ITEM NO.61-324-210  
MODEL NO . #TTC JP807**

## Content

Specifications	3
Safety Warnngs & Cautions	3
Unpacking	4
Assembly	4
Workpiece Stop Assembly	4-5
Maintenance	5
Parts Drawing	6
Parts List	7

## SPECIFICATIONS

Characteristic	Value
Dimensions	17-3/8"×5-1/2"
Bending	2-½ Ton
Max.Pressing Movement	2-½"
Min.Radius	1/4"
Capacities (Width × Thickness)	3/4"×11/16" 2"×7/16" 4"×5/16"

## SAFETY WARNNGS & CAUTIONS

### **1. Keep Work Area Clean.**

Cluttered areas invite injuries.

### **2. Keep Children Away.**

All children should be kept away from the work area. Don't let them handle the tool.

### **3. Do Not Operate The Tool If Under The Influence Of Alcohol Or Drugs.**

Read warning labels on prescriptions to determine if your judgment or reflexes are impaired while taking drugs. If there is any doubt, do not attempt to operate.

### **4. Avoid Moving Parts During Operation.**

Keep fingers and hands away from all moving parts.

### **5. Use Eye Protection.**

Wear ANSI approved impact safety goggles.

### **6. Dress Safely.**

Protective, gloves and non-skid footwear or safety shoes are recommended when working with and operating the tool. Don't wear loose clothing or jewelry. They can get caught in moving parts. Also, wear a protective hair covering to prevent long hair from getting caught in the tool.

### **7. don't Overreach.**

Keep proper footing and balance at all times.

### **8. stay Alert.**

Watch what you are doing. Use common sense. Do not operate any tool when you are tired.

### **9. Replacement Parts And Accessories.**

When servicing, use only identical replacement parts. Only use accessories intended for use with this tool. Approved accessories are available from distributor.

### **10. Store Idle Equipment.**

When not in use, the tool should be stored in "closed" position and in a dry location to reduce rust. For safety, keep out of reach of children.

## UNPACKING

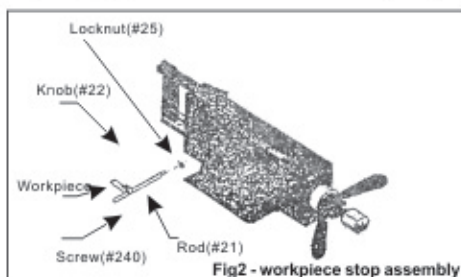
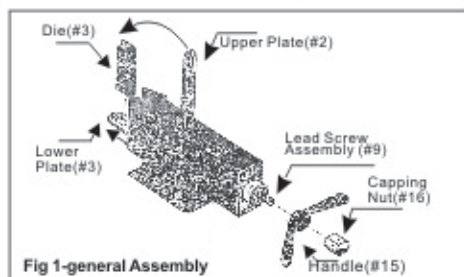
Ref	Item Description	Quantity
N/A	Bending Brake Unit	1
3	Die	1
15	Handle	1
16	Nut	1
21	Rod	1
22	Knob	1
23	Workpiece Stop	1
24	Screw	1
25	Nut	1

## ASSEMBLY

For best results, bolt the Bending Brake Unit to a stable workbench or table when using become necessary when attempting to bend thick or strong materials.

### General Assembly

- Step 1: Screw the HANDLE(#15) onto the LEAD SCREW ASSEMBLY(#9) as shown  
 Step 2: SCREW THE capping nut(#16) onto the end of the LEAD SCREW ASSEMBLY  
 Step 3: Place the DIE(#3) between the upper plate(#2) and the LOWER PLATE(#17)



## WORKPIECE STOP ASSEMBLY

The workpiece Stop may be assembled to either side of the Bending Brake Unit. Illustrations will be shown for one side only.

- Step 1: Place the LOCK NUT(#25) on the ROD (#21) and tighten to the end of the threads as shown in Figure 2.  
 Step 2: Secure the ROB to the side of the Bending Brake Unit.  
 Step 3: Tighten the LOCK NUT.  
 Step 4: Assemble the SCREW (#24) and KNOB (#22) to the WORKPIECE STOP (#23)  
 Step 5: Slide the Workpiece Stop Assembly onto the ROD in the desired position and tighten the KNOB.

Step 1: Place the workpiece between the PRESSING DIE (#3) and the BENDING DIE (#3) shown in Figure 3.

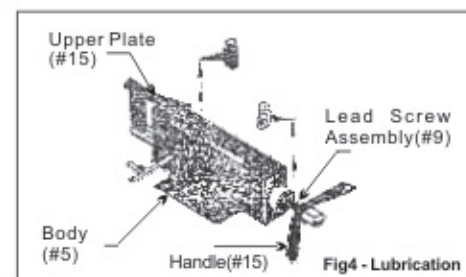
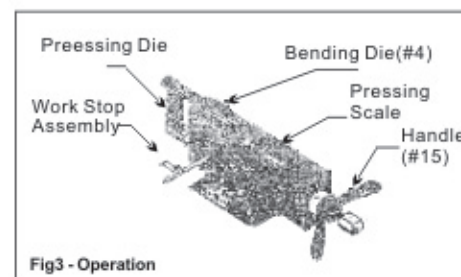
Step 2: If multiple bends at equal lengths are required, assemble and adjust the Workpiece the desired position (see Workpiece Stop Adjustment instructions above).

Step 3: Hold the workpiece in place and tighten the PRESSING DIE by turning the HANDLE clockwise.

Step 4: Once the PRESSING DIE pressure is enough to hold the workpiece in place. Required workpiece.

Step 5: Continue pressing until the desired bend has been reached. For precise results Pressing Scale, located on top of the Bending Brake, to measure the bending din

Step 6: When the desired bend has been reached, release the workpiece by turning the counterclockwise and pushing the LEAD SCREW ASSEMBLY(#9) in.



## MANTAINENCE

Regular lubrication will help lengthen the life of the your BENDING Brake. Always inspect the tool before use for damaged parts. Replacement parts may be purchased Through distributor

### Lubrication

Step 1: Turn the HANDLE(#15) clockwise and fully extend the LED SCREW ASSEMBLY (#9) as shown in Figure 4.

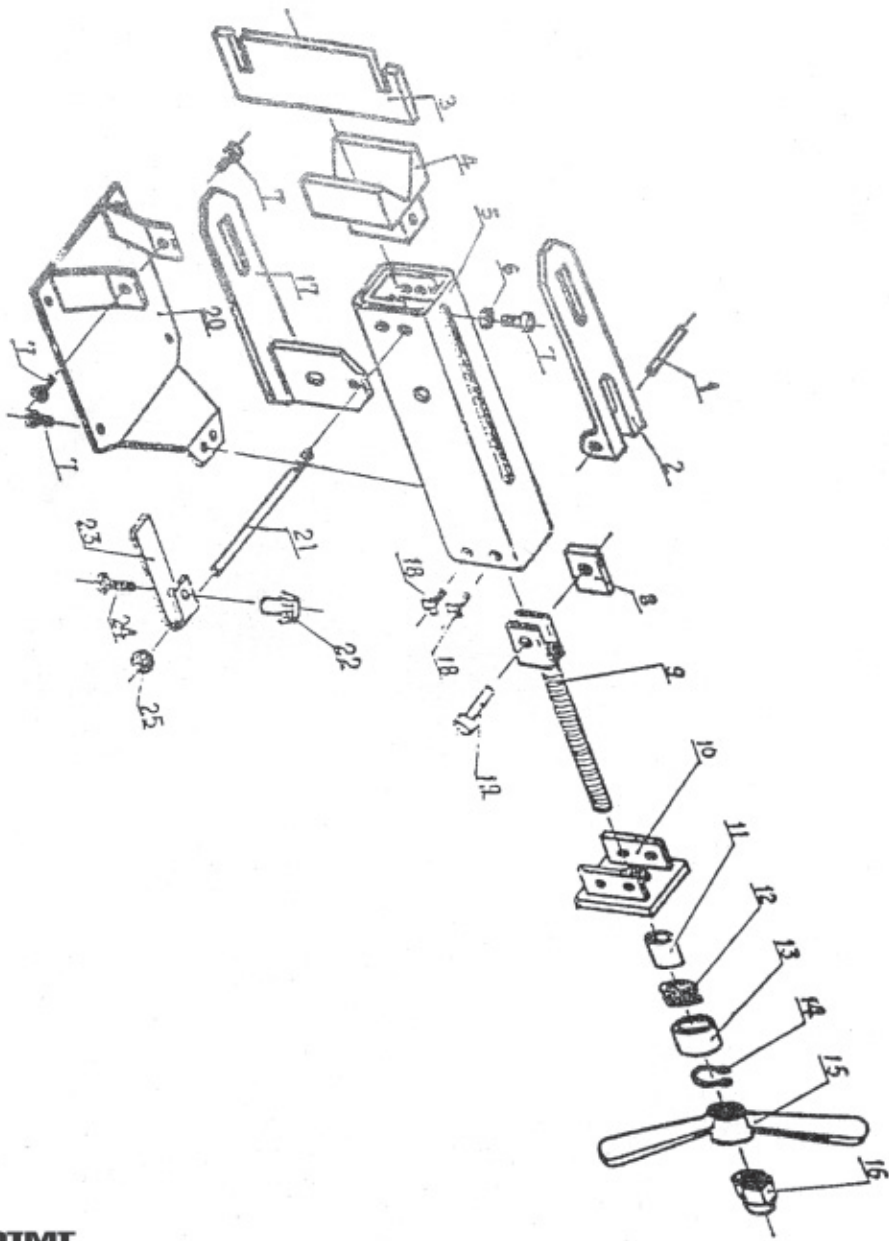
Step 2: Place five drops of oil along the length of the LEAD SCREW ASSEMBLY.

Step 3: Tighten and loosen the HANDLE until the oil fully coats the LEAD SCREW ASSEMBLY.

Step 4: Turn the HANDLE counterclockwise and return the Bending Brake to its original position.

Step 5: Place two drops of oil on the hinge between the UPPER PLATE (#2) and the BODY(#5).

## PARTS DRAWING



## PARTS LIST

PART#	DESCRIPTION	
1	Pin	1
2	Upper Plate	1
3	Pressing Die	1
4	Bending Die	1
5	Body	1
6	Washer	1
7	Screw	5
8	Washer	1
9	Lead Screw Assembly	1
10	End Cover	1
11	Inner Bushing	1
12	Bearing	1
13	Outer Bushing	1

PART#	DESCRIPTION	
14	Spacer	1
15	Handle	1
16	Capping Nut	1
17	Lower Plate	1
18	Screw	1
19	Shaft Pin	1
20	Base	4
21	Rod	1
22	Nut	1
23	Workpiece Stop	1
24	Screw	1
25	Lock Nut	1
		1